



formlabs 

ADDITIVE 

# FORM 4 + FORM 4L SLA ECOSYSTEM



FORM

4

# BLAZING SPEED MEETS INDUSTRIAL PRODUCTION

GET MORE DONE WITH MOST PRINTS IN UNDER 2 HOURS.<sup>1</sup>

<sup>1</sup> Typical print time using 80th percentile print height (53mm), 100 µm layer height, and any material

Battle Beaver Customs,  
Game Controller



1 H 38 MIN

RightHand Robotics,  
Robotic Finger Overmolds



2 H 1 MIN

Electrical  
Connectors



1 H 28 MIN



FORM

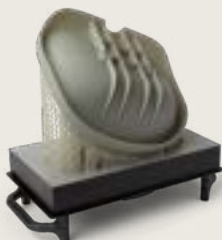
4L

# BIG PARTS, BLAZING FAST

LARGE PRINTS IN UNDER 6 HOURS.<sup>2</sup>  
4.6X LARGER BUILD VOLUME THAN FORM 4.

<sup>2</sup> Typical print time using 80th percentile print height (53mm), 100 µm layer height, and any material

Radio Flyer,  
Seat Prototype



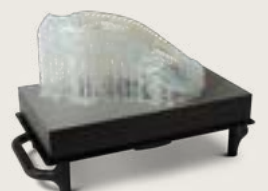
2 H 37 MIN

SpaceCraft  
Display Holders

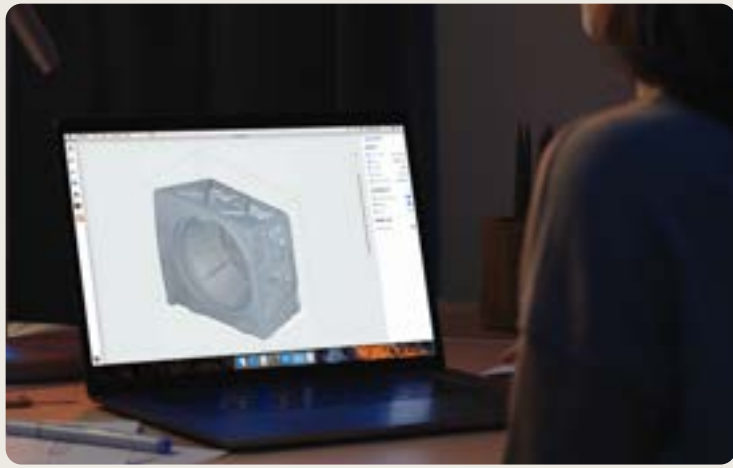


4 H 12 MIN

Lacrosse  
Head



4 H 54 MIN



# PRINTERS THAT JUST WORK

SO INTUITIVE THAT ANYONE CAN LEARN TO PRINT IN 15 MINUTES.

Go from CAD to printing in minutes with just a few clicks using our free PreForm software.

Upgraded automatic and fast resin dispensing, and 5L Resin Pumping System.

Monitor your prints and manage your printers from anywhere with an integrated camera, printer diagnostic tools, and our free Dashboard software.

Easy, effective post-processing with quick-release Build Platform Flex, Form Wash, and Form Cure.

# TACKLE ANY PROBLEM

WITH OUR INDUSTRY-LEADING RESINS AND OPEN PLATFORM.

Leverage high-performance materials optimized for impact resistance, rigidity, flame retardancy, flexibility, and more.

Non-acrylate chemistries like true silicone, ceramic, and polyurethane materials.

Certified third-party materials and open mode available.

Option to customize print performance for your exact part using editable and shareable print settings.



# STUNNING PARTS

THAT ALWAYS FIT WITH A SURFACE FINISH THAT RIVALS INJECTION MOLDING.

Sharpest details: highly collimated light with pre-tuned anti-aliasing for subpixel resolution.

Smoothest surfaces: lower peel forces and light touch supports.

Most accurate assemblies:  $\pm 0.15\%$  XY dimensional tolerances so assemblies always fit.

# UNMATCHED RELIABILITY

STOP COMING BACK TO FAILED PRINTS.

Validated Print Settings

Intelligent Control Systems

Re-Engineered, Long-Lasting Consumables

Factory Calibration

Remote Monitoring







# TECH SPECS

FORM

4

FORM

4L

Technology	Low Force Display™ (LFD)	
Build volume (W x D x H)	20.0 × 12.5 × 21.0 cm   7.9 × 4.9 × 8.3 in	35.3 × 19.6 × 35.0 cm   13.9 x 7.7 x 13.8 in
Layer thickness (Z resolution)	25 - 300 microns	25–200 µm   0.001–0.008 in
XY resolution	50 microns	46 microns
Maximum print speed	100 mm/h	80 mm/h
Printer weight	18.3 kg   40.4 lb	58.5 kg   129 lb
Printer dimensions	39.8 × 36.7 × 55.4 cm   15.7 × 14.5 × 21.9 in	66.4 x 52.8 x 79.4 cm   26.1 x 20.8 x 31.3 in
Warranty and service	One-year warranty included Paid service and extended warranty options available	
Software compatibility	Windows 7 and up   Mac OS X 10.12 and up	
File types accepted	STL, OBJ, 3MF	

"Form 4's **speed and materials versatility** enable us to create multiple prototypes and manufacturing aids every day. The printer has already changed the way we design and produce parts **helping us drive efficiency in our product development**"



Bruno Alves,  
Development Engineer AM/IM, Ford Motor Company



team@additive-x.com

130K+ Printers Shipped | 300M+ Parts produced

**GET STARTED NOW**